

TOM KEDUU



Kabiyè

TOM KEDUU

Histoires en langue kabiyè

Ces histoires sont écrites par des apprenants et moniteurs dans le programme d'alphabétisation

Ce livre a été produit avec l'assistance technique et financière de SIL Togo-Bénin

© 2011, ACAKE

Association Chrétienne pour l'Alphabétisation
en Kabiyè et l'Epanouissement, (Sotouboua)

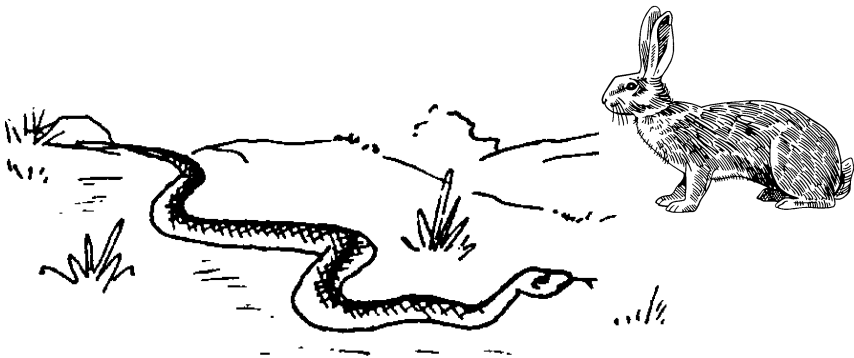
1ère édition, 1er tirage, 500 expl.

Ɖalu Kujɔɔ ku-ɪ

Aji ne Ɖalu paawena mbu, ñɔɔsi nastyi lu, paanay tɔɔnay se pɔtɔɔ. Ɖalu kuyi eyeli ka ka ekɔɔ etali pɔɔ nakeye taa le, lum sɔwa pɔkazi ñuu. Ɖalu hosi lum mbu ne ekpa kpakpasi sakiye ne ekpena. Etalaa le eyaa Aji: Aji kɔɔ ne ñmu kpakpasi ne ñwona ña-halu ne piya. Ele Aji taa la lelenɛ ne epɔɔi Ɖalu se: le ñkpa-si? Ɖalu se: pɔɔ sɔsɔɔ taa. Doo yuwa le, Aji kpay ñumiyɛ ne eka Ɖalu nɔnɔɔ tɛɛ; Ɖalu liya hum le, pɔsɔbi-ɪ. Tɛv fema le, Aji yay Ɖalu se: kuyi dɪdɛɛ kpakpasi dɛdɛ. Ɖalu cosi-i se: dɔo taa maliya hum ne ñumiyɛ naɔiyɛ sɔbi-m; maawoki. Aji se: Ɖalu menteheyi-ɛ se ñtaapeɔɔiy ñuma yem yem. Ɔnaa yɔ! Ele Aji labi lɔɛ lakasi se piyele e-dɛke ne eɔɛɛ ekpa kpakpasi. Ekɔmni kpakpasi dɪkpaye le, etatɪhav Ɖalu kpakpayay. Ɔɟu Ɖalu wɪlɪnɪ-ɪ kpakpasi dɛdɛ. Ele Aji kilɪ Ɖalu lɔɛ.

Mbu yebina toovenim feyi leleleeyɔ.

Mayu: PATE Essɔhanam Sessaro



Ɛso wazuu e-piya yoo yo

Evebiya nabeye kewena mbu naadozo; paɗu taabaliye. Pa-taa le, kuyum sey Ɛso, naale esey. Powoki hayim ne weyi esey Ɛso yo, epazi sev le, naale mba paasey yo, papazi hayuu. Paa dooye mbu palaki. Weyi esey Ɛso, yo eheyiy-we Ɛsotom paa dooye se patali hayim taa le, pesee Ɛso ne puco papazi hayuu; paaniy.

Pinay tema le, pakpay toonasi ne pekpena diya. Weyi esey Ɛso yo, etoonay kuli naale mba paasey Ɛso yo. Pana se pa-taabaluu toonay kuli-we le, pɔpɔzi-i se: taabaluu, pilabi ezuma ne ño-toonay kuli-du? Mbu taabaluu cosi-we se: me-Ɛso weyi mensey yo, enu wazina pu-yoo. Mbu puoyo yo Ɛso deke kon hayna pitina. Kedenya yoo cine, eso taa ne tataa, puwee se dicalu da-ti Ɛso.

Mayu: ATEYO Atamsinam Sessaro

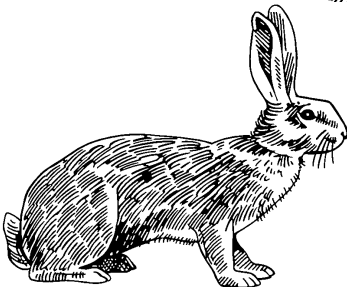
Lelej wenu wayi

Abalu nooyu kewena mbu, kuñon pidufeyi. Kiyaku nakuyu elu tanañ tee cu ne ekpay hee ne edee nitu taa ne edo min ne ewo hee. Etema wabu le, ekpay nimiye ne edee ekpa tuw yoo se ediy e-liu tee, mbu puoyo yo ewena lumayza pidufeyi. Canay talaa ne ena hee min taa mbu le, ecañ tuw kide tee ne ekpay hee ne ekayi ne etoo. Etem too le, Eñoo lum. Eñoo lum mbu le, eto se: leeleeyo mahaya. Mansikay yee mbu lelej wenu wayi. Canay yoodi mbu le, abalu ele, eni mbu le, etii.

Mayu: ATEYO Atamsinam Sessaro

Aji ɔvɔ mɪla kpou nɛ ɛkpay pɛlɛ

Wiyav nɔɔyɔ kɛwɛna mbu; kiyaku nakuyɔ wiye lɛ, ɛma kobuka nɛ ɛyaa kpɛyɪlɪ ɛ-tɛ. Pɛeye ehɛyi-wɛ se: Apɪzɪy ɛɔv mɪla kpou taa nɛ ɛkpay mɛn-pɛlɛ? ɛyaa tuja se paapɪzɪy. Aji kɔma ɛnu mbu lɛ, ɛpazɪ sɛya ka ka nɛ ɛtɔlvɔ nɛ ɛkuyɔv nɛ ɛ-nɛmbɛla nɔsɪ taa kpɛzɪ, ɛkɔɔ ɛtalɪ wiyav tɛ pɛeye nɛ ɛpɔzɔv wiyav se: ɛbɛ laba nɛ ɲmakɪ kubusi mbu? Pɛeye wiyav se: manɔay se nɔɔyɔ ɛɔv mɪla kpou kune ki-taa nɛ pusɪ walɪ walɪ nɛ pɔvɔ kpay mɛn-pɛlɛ nɛ ɛlabɪ-i halɪ. Aji cosɪ-i se: Mbu ɲɔay nɛ ɲtaya-m nɛ ɲɔay nɛ ɲmakɪ kobusi na. ɛlɛ Aji pɪsɪ ɛ-tɛ nɛ ɛpasɪ ɔasɪ cav nɛ ewokina wiyav tɛ nɛ ɔvɔ nɛ ɛɔvɔ kpou taa. ɛna se ɔasɪ kpa kpou hɛku lɛ, ɛyele mbu nɛ ɛpasɪ mɪla wonav ɛɔvɔ ɔasɪ yɔɔ.



Pukɔma pusu le, wiyau ɔayni eyaa kpeyluu. Ekpay e-pele ne eceli-i pula se Aji kpay halu ewona-i e-te ne so. Kiyaku nakuyu wiye le, halu nangay mulum namiye yɔɔ. E-walu ñewee ne epeziy piya. Kewiliy le, Aji wee ne epeziy-ke ne yondu se: "me-leytu yɔɔ mankpay pele cancamiya miya". Halu niwa le, epɔzuu-i se: Aji nyondu yondu suwe? Peeye le, eheyi-i se piya wiyna ne menpeziy-ke se: taawii ne ño-ɔoo kɔɔ. Aji ɔayni pazuu yondu you ezi eeyou yɔ. Pitema, halu kuyi ne ekpe se etana mbu se ɔasi pacawa ne padu kpou taa. Mbu labina ne pifeyi se ña caa le, nyedi ña-piya hali ñinga.

Mayu: LESSAH Julien Sessaro

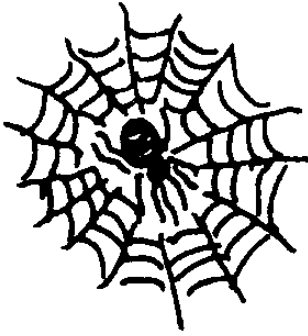
Pele nɔɔyɔ tɔm

Pele nɔɔyɔ kewena mbu, payay-i se Nakaa. Ewee le, eeñɔtɔuna e-ɔoo mizay nɔɔ kav. Aluwaatu ndu e-ɔoo ñɔɔzuu e-ti se ewolo mizay nɔɔ yɔ, peeye enu ñɔɔzuu e-ti se eɔee yeluu. Eiy ne e ne abalibiya pɔɔɔ ne powoki ne pɔñɔɔ sulum ne papay. E-ɔoo yɔɔduu le, emeyu ne e-ñuu. E-tumiyɔ le ñɔɔtɔ ne paye.

Pele enu ekɔɔ ne ewali. Ewoba e-walu te le, eesiy labu tɔɔnay ne ɔɔzi. Puyɔɔ le, piya ña mi-ñuma ne piwazi-mi.

Mayu: LESSAH Julien Sessaro

Ajay ne Kahuna



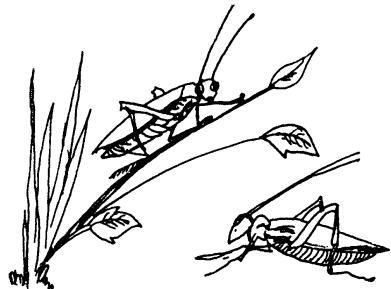
Ajay kewena mbu e ne
ε-taabalu Kahuna padu ngbeyε ne
pahaytɔ ɗama. Pitalina Kahuna le,
keheyi ka-halu se: mu sona ne
ɲnaɲ ne ɲtɲna ma-wayi. Enaɲ ne
ε-tɲna ε-wayi ɗɗɗɗ ezi εyɔɗɗu
yɔ. ε-halu wonaa le, eyaa-i se:
mɔnkɔnaa. Ele se: ɗu miɲ ne

ɲkpaɲ tatay ne ɲsu ε-yɔɔ. Ele se: num wε le? Ele se:
mɔnkɔɲ. Ewolo εkpa tatay taa ne esobi ne num lu ne
padusuni kakayisi ne pɔtɔɔ. Teu fema le, Ajay celi ε-halu
sona se enaɲ ne εtɲna pa-wayi.

Ele ε-halu se: num feyi keke, ɲlebe somtu. Ajay ele se:
naɲ ɲkɔna. Ele ε-halu ñala ezi εyɔɗɗu yɔ ne ewona.
Ewona le, eyaa-i eheyi-i se: mɔnkɔnaa. Ele Ajay se: su
miɲ yɔɔ tatay ne mɔnkɔɔ. Ele ε-halu la mbu ɗɗɗɗ; Ajay
kɔɔ ne εkpa tatay taa ne esobi se num elu ne padusuni
kakayisi. Ele ε-halu tɔɲ se: ebe laba ne ɲkpa tatay taa ne
ɲsobuu tatay sa miɲ? Ele ecosi-i: ayi ayi, cɔna-m. Kele
ε-halu su ne εcɔɲna-i tatay taa.
Miɲ ñaki-i ele ezuma kpi.

Mayu:

PATE Essɔhanam Sessaro



Tɔm keduu

Ejadɛ naɖiyɛ taa posusaa se nɔɔyɔ kɔŋ se ɛmu ɛyaa pa-kuñɔmɔŋ. Weyi ɛwɛna kuñɔŋ yɔ, ɛlina nɛ pamu-i nɛ ɛhɛzi. Peeye nɔɔyɔ ɖɔki ɛ-kuñɔŋ e-nesi taa nɛ ewona. Pikedaa lɛ, nɔɔyɔ ñasiyɛ ɛ-ñiŋgu ɖɔku taa nɛ ɛkɔna. Pikedaa ɖɔɖɔ lɛ, tozo tu ñɛpilinziy ɛ-ñiŋgu kɔm yɔɔ, mbu puyɔɔ yɔ kíkila yuŋ nɛ pucɔɔ se pasiylɛ-ku. Kajalay tu ɛlɛ, ɛmayzi se pikediylɛ lɛ nɔɔyɔ ñakay kɔnau ɛ-ñiŋgu nɛ lɔɔɖiyɛ sɔsɔɖɛ. Peeye ɛkɔti ɛ-kuñɔŋ kɔti nɛ ɛpisi ɛkpe ɛ-tɛ.

Taalalaa itaayay kuñɔŋ hiɖɛ yem yem. Mbu puyɔɔ yɔ, yee ŋlosa kuñɔŋ nɛ kíkɔŋ kɔyɔ, ŋsey nɛ piyɛ-i-ŋ.

Mayu: LAGUIMBE Koumeyalo Sessaro

Tɔm keduu

Egbam nɔɔyɔ wɛni mbu. ɛwɛni taalalaa naalɛ. Nakuyɔ wiye lɛ, ɛpɔzi-wɛ se ɛna se ɛbɛ yɔɔ pɔsɔɔli-i. Kajalay tu se: "mɔnsɔɔli-ŋ mbu puyɔɔ yɔ, ŋkɔs kɔpina nɛ ɛkɔŋna nandu nɛ ɖitɔki, pu-yɔɔ mɔnsɔɔli-ŋ."

Naalɛ tu se: "mɔnsɔɔli-ŋ mbu puyɔɔ yɔ, ɛsɔ tɔma se ɖisɔɔli ɖama. Mɔnsɔɔlɛ se mansini-ŋ ñɛ-ɛɛyutu taa nɛ ɖisini ɖama."

Evemiye naɖiyɛ lɛ ɛsɔ mayzi-wɛ se ɛna. Egbam li tanan tɛɛ cu lɛ, ɛkpay ɛ-tɔɔ nɛ ɛɖɛɛ laku. Wiyau piyalu ñaakuyi lɔŋ nɛ etii teye se ɛñiniyɛ tatu. Egbam na-i lɛ, ɛwɛɛ se tetɛgbine; ɛhɔ tɔɔ nɛ ɛyay-i nɛ ɛsi.

Peeye egbam pɪsɪ dɪyɑ nɛ ewolo ɛ-taabalv kajalay tu ɔɔɔ nɛ eheyi-i mbv pɪlaba yɔ. Peeye ɛɛ heyi-i se: "sɔɔndv ɛtaakpa-ŋ Mansɪyɪnɪ-ŋ nɛ dɪwolo laku taa nɛ dɪbimi-i, nɔɔyv ɛtaanu." ɛɛ pɪla mbv.

Egbam pɪsɪ dɪyɑ ɛ, ewolo ɛ-taabalv naale tu ɔɔɔ nɛ ɛkɛdɪ-ɪ mbv pɪtɪŋga payɪ pɪlaba yɔ. ɛɛ ɔsi-i se: "wolo nɛ ŋlɪzɪ heu kvɔɔm ñe-heŋ taa nɛ dɪwolo dɪkuli pɪlav nɛ dɪlɪzɪ ɛyv nɛ dɪɛyɪzɪ-ɪ lone nɛ dɪpɪsɪnɪ heu ɛyv lone taa." ɛɛ, pɪla mbv. Wiyav ñnɪ ɛ-pɪyalv nɛ ɛwu ɛ, ɛsu liidiye kudokiŋ egbau se weyi ɛna ɛ-pɪyalv yɔ, ɛkpay.

Egbam taabalv kajalay tu ɛnɛ, ɛnɪ mbv ɛ, ewolo eheyi wiyav mbv pɪlaba yɔ. ɛɛ, wiyav tiyi nɛ payaa Egbam. ɛɛ kɔma ɛ, ɛkpezi se heu sɪbɪna nɛ ewoni-i tɛye nɛ ebimi-i. Peeye wiyav pɔzi-ɪ se: "payay ɛyv se heu na?" nɛ ɛsɔzi se, dɪwoki tɛye nɛ dɪkuli pɪlav. Yee dɪmaynɪ ɛyv, ña egbam, ŋsɔv salaka taa. ɛɛ yee dɪmayna heu, weyi ña ŋheyaa yɔ, pɪpɪsɪy ña-ñv taa.

ɛɛ, powolo nɛ pokuli pɪlav ɛ, pamaynɪ heu. ɛɛ wiyav se katayzay tu ña pɪpɪsɪy ña-ñv taa. Nɛ pakpa-ɪ nɛ paɔv salaka.

Tɔm kɛɔv heyiy-dv se pɔwɛ se dɪsɔɔlɪ dɔ-taabalaa pɪtɪŋga pɪ-taa: paa lelenj taa yaa paa kvɔɔŋ taa.

Mayv: LESSAH Daniel

Tɔm keduu

Abalu nɔɔyɔ wɛnɪ dɛ-tɛ tɛtɔ taa nɛ payay-ɪ se Atakpanɛpɪɛ. Nakɔyɔ wiye ɛ nɛ ɛ-halu piyozi-wɛ liidiye yɔɔ. Abalu ɛnu se halu mɪla liidiye. Halu kpɛzi se ɛtana dɪ-yɔɔ. ɛ nɛ ɛ-walu poyoo haŋŋɛ. Abalu kpay lumayza se pɛdɛ kazaŋay nɛ yee pɪkpa nɔɔyɔ yɔ, ɛhɛyɪ liidiye ndɪ dɪ-tɛ nabulɛ.

Powoba lɛ, pɪtakpa nɔɔyɔ. ɛlɛ pɪkɛna Abalu kɪɛyɔ se ɛhɛyɪ halu, mbu pɪyɔɔ yɔ, ɛkpa halu mɪlum.

Koobiya, mbu yebina nɛ yee ŋtana nɔɔyɔ nɛ ñɛ-ɛziye yɔ, taakpa-ɪ dɪlum. Mayu: LESSAH Daniel

Fendu feyi wazay

Abalu nɔɔyɔ payay se Kɪbandu. Kɪyaku nakɔyɔ ɛlɪnɪ hayɪm taa. ɛhɔba hɛɛ nɛ ɛtɔɔ nɛ pɪkazi naɔɪye luuu nɛ ɛkayɪ-dɪ kpɪlɪŋ kpɪlɪŋ. ɛkɔyɪ kpɛm lɛ, ɛkpay-dɪ nɛ ɛdɔ huyuu taa. ɛlɪ nɔmɔɔ taa lɛ, ɛɛɛ ŋgbam nɔmɔɔ nɔɔ. Kpaagbaa mbu lɛ, sukulibiya nastɪyɪ lɪnɪ sukuli taa nɛ ñɔɔsɪ wɪy-sɪ. ɛtɪyau-sɪ se pasu-ɪ mbu pɪyɔɔ yɔ pa-taa wɪwa nɛ papasɪ kaluu nɛ pɛdɛɛ. ɛlɛ pa-taa nɔɔyɔ wolo



abalu susɔ ɛnu ɛ-cɔlɔ se ɛsu-ɪ. Peeye abalu ɛnu ɛlɪza hɛye ndɪ nɛ ɛɛlɪ abalɪbɪya ŋga, piyele pɪpasɪ wɪzɔɔ ɛ-taabalaa.

Taabalaa, fendu taa kazɛy feyɪ.

Mayu: LESSAH Daniel

Awudaa efelitu tɔm

Abalu nɔɔyɔ wena mbu ne kiyaku nakuyɔ wiye le, pɔwɔy e-koowu halɔnɔnɔ nɔɔyɔ. Ewolo epɔsi piye ne ekpa e-cuyɔ se enu kuvɔni e-koowu, ewoni piye ne ecɛli-i. Elɛ kpe kabɔye dɔsi ne epɔzi tuɔ nɔɔyɔ cɔlɔ piye le, elɛ kpa-i dɔdɔ se enu lakɔni-i le, halɔ enu epɔsi ekɔɔ abalu ene e-cɔlɔ ne eheyi-i se: pɔteke malakɔni ño-koowu enu ye, man-cuyɔ lakɔni-i. Peeye elɛ yaa-i wiyau tɛ.

Wiyau enu eke halɔ enu e-walu egbele. Danay dɔnaa ne tɔm huyaa talɔ le, wiyau pazɔ tɔm yɔɔɔɔɔ ne esɛɛ eyaa kpɛɛɛ. Elɛ, abalu yɔɔɔɔ e-tɔm mbu le, halɔ enu se: menkpem kabɔye dɔsi ne mɔnpɔsi piye le, pikpa ma-cuyɔ se enu lakɔna e-koowu. Wiyau se: eni elɛ ña-cuyɔ elɛ. Halɔ enu se: ña Wiyau kee kee. Wiyau se: cuyɔnaa wɛɛ le, pɔdɔwa weyi ɲtɔɲ tɛ; elɛ halɔ se ma-walu neu. Peeye Wiyau se menteke ña-walu neu ye, elɛ menke ña-walu egbele. Abalu se: ye mbu yɔ pɛdɛɛ kazaɲay pa-naale. Wiyau se: kajalay le; menke e-walu egbele, nabule le, menke Kristu tu ne puhay-m waɖe se mowolo kazaɲay ɲga, nabudozo le, ɲpɔzi piye le ɲtɔkɔna piye se ɲɛli-m ne ɲdɔɲ se paya-ɲ mɔn-cɔlɔ ne pɔcɔ ɲtɔɲ se ma naa we? Wiyau dɛzi-we Kantɔɔ tɛ le, elɛ epɔzi halɔ enu se tɔwaa ezɔma cɔlɔ ɲpɔzi ñe-pee ana? Elɛ se kuɖum. Peeye Kantɔɔ tɔ dɔdɔ se yee mbu yɔ, wolo ɲkpay-i ne ɲkɔni-i cenɛyɔ ne epaazi pɔzɔɔ ne dɔna. Peeye eheyi wiyau cikpelu se: wolo ɲyaa ñe-egbele ne ekɔɔ ne dɔna ezɔma

mbu dɔlakɪ yɔ. Halu dɛɛ ekpe kabɪye dɪsɪ nɛ ewolo tuv
 enu e-cɔlɔ nɛ eheyi se: mɔ̃nɔ̃zɪ man-tɪ se ŋkɔɔ nɛ
 ŋkɔlɪ-m; kɔɔ nɛ dɪdɛɛ. Tuv talɪ Kantɔɔ tɛ nɛ pɪlabɪ-ɪ pita
 se halu enu ɛcɛtɪ tɔm kpem pɪdufeyɪ. Kantɔɔ se: halu ña,
 ña nɛ ma-wiyav cikpelu ɛnɛ ɪdɛɛ kazaŋay. Wiyav cikpelu
 se: maawoki, mbu puyɔɔ yɔ menke Kristu tuv nɛ puhay-m
 waɖe se mowolo-ke. Kantɔɔ se kasa ŋcay se ŋpɛɛŋ
 men-kewiyay tɛtɛ yaa we? ɛlɛ se: ndu mɔyɔɔdaa yɔ ndu
 lɛ. Kantɔɔ se: mɛndɛzɪy-mɪ Prefe cɔlɔ nɛ ɛlɛ ñaahu-mɪ-tu.
 Patɪŋa payɪ pɛdɛɛ Prefe tɛ. Peeye Prefe yɔɔdaa se: wiyav
 yɔɔdɪ ndu ɛkɔmnaa yɔ nɛ manu yee. ɛyɔɔdɪ ɛ-ñɪndu lɛ,
 halu yɔɔdɪ mbu dɔdɔ; ɛlɛ ɛ-tɛ tuv taa sɔkɪ yem nɛ pulakɪ-ɪ
 ezɪ ɛmɪ wiyav cikpelu enu nɛ ɛnɛ halu pɛdɛɛ kazaŋay yɔ.
 Wiyav cikpelu dɔayɪ kizuu se eewoki dɔli.

Peeye Prefe tɔm se: ye mbu akpa halu ɛnɛ se ɛnɪ
 lakɪnɪ e-koowu? Abalu se ma. Peeye eheyi-i se : pɪlabɪ
 ezuma nɛ ŋkpa halu ɛnɪ lɛ, ña nɛ ɪ ɛɛdɛy kazaŋay nɛ
 ŋcay se ɛnɛ wiyav pɛdɛɛna naa we? ɛlɛ tatasɪ natuyv
 yɔɔdɪv.

Pɔkɔma lɛ, wiyav yele kewiyay tɔɔv nɛ abalu enu
 ɛkpay-ke. Peeye ɛpazɪ nazɪv wiyav kɪbɪnɪv ɛnɛ. Kajalay
 lɛ, ɛtɛy ɛyaa pɪdufeyɪ nɛ pɔkɔɔ pakpa-ɪ ɛ-tɛ nɛ pɔdɔɔnɪ-ɪ
 se pataatasɪ-ɪ nav Awuda. Peeye ɛ-pɪyalaa wolo sɔɔjɔnaa
 cɔlɔ nɛ pɔkɔɔ pakpa-we nɛ powona-we falaa kuduyuu
 tɛɛ kɪyakɪŋ naadozo pɔtɔtɔ nabuyv. Sɔɔjɔnaa lisɪ-we nɛ
 peheyi-we se paha-we kɪyakɪŋ naale dɛke se pɔkɔna-ɪ.

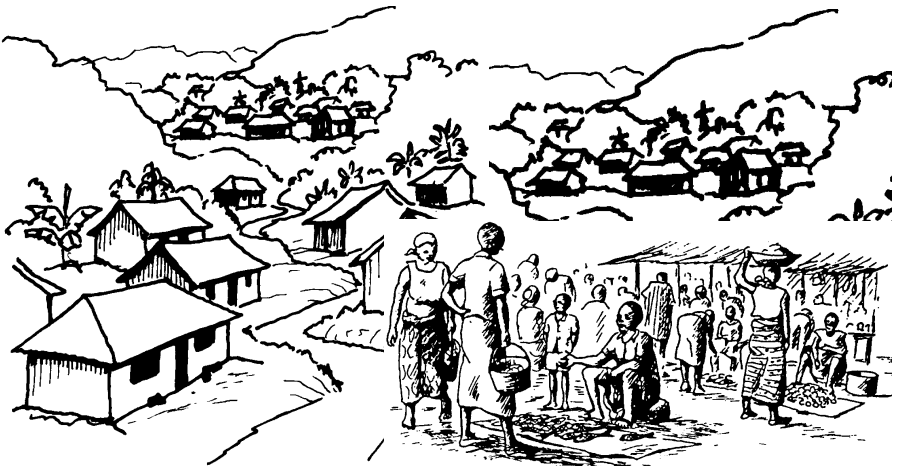
Peḍee-i cau. Pitali ezi fenasi naale le, wiyau kifalu ene epazi eyaa teev; mba mba peweni hayim loḅḅ e-colo yḅ se powolo ne pamu e-hayim tija payi ne eenay dende eehayi yḅ le, ekuyi e-maymay ne edee. Mbu wena pulaki halni sḅḅ.

Taayele ne nḅḅyḅ dḅ ña-waḍe yḅḅ kav, mbu piyḅḅ yḅ piweekiḅ ñe-wezuu lelāa esundaa.

Mayu: AMAKE Evabou

Mbu pulaba ne pula se eyaa wee Awudaa yḅ

Nakuyḅ wiye ma ne man-caa ḍiwoba cḅḅ nḅḅyḅ colḅ. Payay-i se Pasikaali. Cḅḅ enu ekpay tom ne ekediḅ-ḍḅ se: taabalaa-mi mbu pulaba ne eyaa wee cine yḅ, mbu le se Anasaayi weyi payayay se Likidi yḅ, enu tamna eyaa kabiyē ḍisi ne ḍoḅḅ ne ekḅḅi-we Awudaa. E-taabalḅ LETENA kaasuni-i tumiyē ndi ḍi-taa. Kajalay mba ekḅḅaa yḅ, paadḅ sakiye. Pa-taa le, ḍinay Huluh mba,



Kajay mba, Kpankaluu mba, Fevdaa mba, Landaa mba. Pınay kudoku ne tanğa ne nasınaza ne nule ne naale taa ekonu-we. Alıwaatu ndu ti-taa le, eyaa mba patıña payı paawe Awudaa cıne yem ñutu taa. Kpına wena atoki eyaa yo kpemtoyısi aadjo sakiye. Peeye weyi payay se Kajaytan yo, eke lan yo conıyo yo, epazi-we teyuu lona hoolıy hoolıy.

Pe-wiyau kaake soso Kodobu. Anasaayınaa mba pedee patasi konau lelaa ne puzuzı kajalay mba yo. Patıña payı paawe Awudaa cıne ne papası kpayu tuuye deş yo. Kajaytan weyi eke lan yo conıyo yo, ele ñaaso Tantıunaa habee nısi. Eyaa mba, padu habıye sosode ndı dıdın dı-yo esınjo yo ne pıhıoyuu taa cıne ne puco pıkojo padu anwa.

Tom tıne tıke tom toovenim ñındı. Anasaayı LİKIDI yabını ñıuu ne samay wee kodjo Awudaa.

Mayu: AMAKE Evabou

Mılaa naale ne Abalu nıoyu po-tom

Abalu nıoyu wena mbı ne edjo dıde pidıfeyı. Kiyaku nakıyo wiye le, mılu nıoyu cay ne emayzi e-ñıuu taa se ela ezıma leee? Eto se: me-liu wee se mıntıo kalımıye nandı. Edde emılı liidiye kudokın mınuu nıoyu te; edde dıdjo se emılıy abalu weyi edjo dıde yo dıdjo. Abalu enu ewena kalımee ne puş ne kpakpafınaa kpem pıfeyı yıoobı. Mılu talı aho naaye tee ne ewolo elosi

ɔɪya ɛ, abalu nɛ ɛ-hɔv tuja payi pɛtɛma sɔv. Peeye mulu woba nɛ ɛtɔli kalimee kpou nɔɔ nɛ ɛkpa kalimee naanza. ɛkpaaway ɛ, e-liidiye kudokiŋ minɔv ɲɔv kitɔli nɔnɔ tɛɛ nɛ ɛcaŋ ɛɖɛɛ. ɛtali ɛ-tɛ ɛ, ewili ɛ-kabua taa ɛ, ɛɛnay e-liidiye. Peeye ɛnawa se ɖɛɖɛ ɛmlaa yɔ peeve pɔtɔlaa. ɛtɔ se ɲɔv me-liu kaawɛna se mɔntɔɔ kalimiye nandu ɛ, pɪla ɛzuma nɛ meleziy me-liidiye yɔ. ɛɖɛɛ ɛna ɛ-taabalu mulu ɛɛlv nɛ eheyi-i mbu pilaba yɔ. ɛɛ se: ɲnay ma mɛwɛna ñɔv. ɖiwolo Abalu ɛnv ɛ-tɛ nɛ ɖɪmu ñe-liidiye. Powoba ɛ, pana pɛɛ nɔɔyɔ ɛwɛɛ ɛhaziy tay yɔɔ. Mulu ɛɛlv se: ɖɔɔɔ ɲna liidiye kalimee kpou ɔɔɔ yaa ɲtana? ɛɛ se: manawa. Pɛɛ wolo nɛ ɛyaa pa-caa nɛ eheyi-i se: nabɛye kɔm ñɔ-ɔɔɔ. ɛɛ lu nɛ ɛha-wɛ kpelezi ɛ, ɛpɔzi-wɛ se: tan waa alaafɪya ɛ; Peeve weyi ɛɛtɔm se ɛwɛna ñɔv yɔ ɛtɔ se: ɖa-caa, ɖɛɖɛ ɖɪkɔma se ɖɪyaki kalimee ɔɪɛ ɛ, ɖɪtamayni-ɲ; aho kaayuwa ɛ, ɖɪtɪcasɪ se ɖɪɔɔyɪ-ɲ nɛ



dikpa kalimee naanza ne disu liidiye kudokin minuu
nɔnɔ tɛɛ. Inawa yaa ntana? Elɛ se: manawa. Elɛ se:
dikɔm se ntezi-dv cenji. Pɪ-yɔɔ dɪsɪ-dɪ se pɪwɪlɪ se
dɪtamɪɪ kumɪlɪ. Elɛ sɪv kuduyuu tɛɛ ne ekpay liidiye
ne elɪzɪ ɛ-kalimee liidiye pɪkazi lɛ, ɛcɛlɪ-wɛ pacan pɛdɛɛ.

Pɪvɔ ne mɪlɪ kɔɔ ne ɛmɪlɪ-n lɛ, ɛsɔ cɔlɔ pɪɪɪnɔ; yee
ɛsɔ caabiyuu ɛtɔm se pamɪlɪ-n yɔ ña ɛyɪ lɛ, nɪfeyɪnɪ dɔŋ.

Mayv: AMAKE Evabou

Pɛlɛ weyi eyozuu ɛyaa yɔ

Pɛlɛ nɔɔyɪ wɛna ne ɛwɛna dɔŋnaa ñɔɔ pɪdɪfeyɪ nav.
Nakuyɪ wiye lɛ, abalɪbɪyɔ nakɛyɛ wolo ɛ-cɔlɔ ne elɛ
yɔɔdɪnɪ-ɪ; etisi se: ɛɛɛ dɪdɔ dɔndɛ. Pɛlɛ ɛnɪv ne abalɪbɪyɔ
nɪga pɛwɛɛ mbɪv, ña se lɛ halɪbɪyɔ ketɛma pɪw Yɛdɛmɛdɛ
taa kpem. Mbɪv pɪlaba yɔ lɛ se dɔo yuu lɛ, ɛɛhɛnɪy ɛ-tɛ
kuduyuu tɛɛ, lɛlɛ ñɪn tɛɛ ɛhɛnɪy. Pɛlɛ ɛnɪv ɛkuyɪv se
ekpɛn lɛ, ɛmɪlɪ liidiye ne ekpena. Tɛv fɛn lɛ, weyi ɛ-tɛ
pɛlɛ sɪwɔ yɔ, ewolo ɛpɔsɪ-ɪ se dɛdɛ dɪtem leeyuu ne
nɪkuyɪ se nɪkpɛn yɔ nɪtakpay me-liidiye kaɔv ñɪv taa yaa
we? Elɛ se: aayɪ mantakpay puyɪ. Pɛlɛ ɛnɪv ɛwɛɛ ɛkpakɪy
dɔdɔ e-dɔo ne ɛ-dɔlɛɛ ne ɛ-kɔɔnaa pɛ-liidiye mbɪv ne
paba kpɛy-ɪ ne pamakɪ tanan ne dɔo. Pɪnɪ-wɛ pɪnɪ lɛ,
pɔdɔɔnɪ-ɪ ne ewolo ɛcay ɛ-kɔɔ lɛlɪ tɛ. ɛmɪlɪ-ɪ dɔdɔ mbɪv.
Elɛ kasɪ liidiye kudoku ne nasɪlɛ e-huyuu taa, pɛlɛ wolo
ɛsɛlɪ kuduku ne pɪkasɪ nasɪlɛ. ɛ-kɔɔ kɔma ne ɛpɔsɪv se:
akpay me-liidiye lɛ, pɛlɛ dɔdɔ se: mantakpay puyɪ. Pɛlɛ

enu, mulum ya se peyebini-i, hayitu ya se e-deke, cetim ya se e-deke. Payay-i se Kusubkpede, patasi-i se Kaasankru, patasi-i se Desunniye. Ijgu ewe deu siŋŋ ele mbu elaki. Nakuyu wiye patasi su liidiye dɔdɔ ne ekpay rikasi le, e-kɔɔ kpay-dɔ ne ewona elo e-yaɔ saɔ taa se etesi kpayu. Ekpay dɔdɔ ne edee. Edɛu le paa weyi ekpiyiɣ e-ñuu yem pitɔŋna e-lakasi yaɔ.

Mbu pɔɔŋ se paa pele weyi le, eñay pana ne edɔki e-ti ne e-walu kɔɔ esɔli-i ne etaakɔ eyeli-i ezi numɔ taa eena-i ya. Dɔdɔ le, paa pele weyi elu ne ela tumiye camiyɛ ne eyaa tɔŋa sɔli-i. Pubu ya evebiya huyuu-i yem ceku ceku.

Mayu: AMAKE Evabou

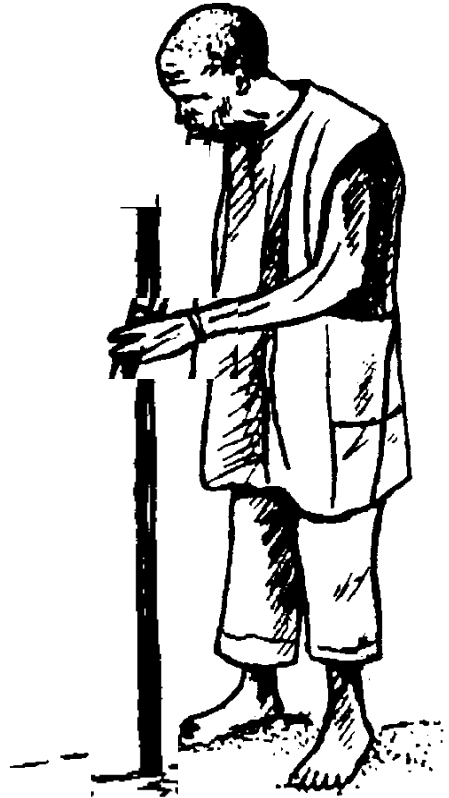
Yulum nɔɔyu tɔm

Nakuyu wiye nɔɔyu hɔŋay yulum, pɔkɔɔ patali pɔɔ nakeye se pedesiɣ le, halaa nabeye wee pɔɔɔtu ka-taa. Peeye yulum pɔsu weyi ehɔŋay-i ya se: manpizɣ meheyi-ŋ mba pewe pɔɔ taa ya yaawe? Ele se: ña yulum ne ma eza tu ne ŋpizɣ se ŋheyi-m mba pewe pɔɔ taa ya. Peeye etɔm se manpizɣ meheyi-ŋ la. Tɔɔ heyi-m yaa: Yulum se halaa wena pɔɔ taa. Etasi yaɔdu se ŋnay mbu pilaba ne mana se halaa wena peeɣe ya; Ele se: aayi. Peeye etɔm se: ŋnay ma-ladiye kuyaa pɔsu esɔdaa ezi kpaɔu ya. Halu pilaki-m ezi mentii ka-taa peeɣe ne

mana kudum nɔɔyɔ nɛ mɛhɛsɪnɪ ma-lanɪyɛ yɔ; tii nɛ
ɲyɔɔɔɔnɪ-m halɔ kɪpanɔ nɔɔyɔ nɛ pɔɔɔ dɪdɛsɪ pɔɔ. Ɛlɛ
pazɪ ewoɲ kpala kpala nɛ ɛtɔ se: mancaaci ña ña-ladiyɛ
lɛ ndɪ nɛ ɲpɪzɪy se ɲkpay halɔ nɛ ɲhɛsɪnɪ ña-lanɪyɛ?

Peeye eheyi-i se: wolo ɲla mbu mɔnɔpɔza-ɲ yɔ. Ɛlɛ wolo
nɛ ɛna halɔ lɛlɔ, payay-ɪ se Wulu, ɛyɔɔɔnɪ yulɔm. Wulu
tisi se ewoki yulɔm tɛ alɪwaatu ndu tɪ-taa.

Peeye yulɔm taa la leleɲ pɪɲɲ, ɛsa ɛ-hɔndɔ ɛnu kpem.
Patalɪ dɪya lɛ, halɔ pɔzɔɔ yulɔm se: lee ño-kuduyuu wɛɛ
tɛ, ɛwɪlɪ se ɲɔv lɛ. Halɔ se: dɛ-m nɔɔ nɛ ɲwolo nɛ ɲtɔlɪ
nɛ dɪlɛyyi. Yulɔm takɪy nɛ
ɛɔav ka ka nɛ ɛkɔɔ ɛtalɪ
kuduyuu tɛɛ nɛ ɛyay halɔ
doɲ se: ñewele, ɛlɛ se:
maayɔ. Halɔ wolo nɛ ɛmɛlɪ
pɔɔyɔɔ wayɪ. Yulɔm tastɪ
yav lɛ, ɛnɪy sɛtɔ ɛ-cɔlɔ; ɛlɛ
se: taɲ kɔɔnɪ cɪnɛ. Peeye ɛlɛ
tɔm se: ca-m ɲna-m lɛ,
dɪlɛyyi. Yulɔm wolo ewɪlɪ
pɔɔyɔɔ wayɪ nɛ ɛmaynɪ-ɪ
peeye nɛ ɛhɔmɪ-ɪ nɛ ewoni-i
kaɔv yɔɔ nɛ ɛhɔsɪ e-wondu
tɪɲa nɛ halɔ ñɪndu dɔɔɔ.
Peeye halɔ heyi-i se: ɲnay,
ñā-maymay ɲkpaykɪyɲa



ñe-kpeyde ne ñdu man-pandɛ taa ne ñla ezi pumay-ŋ yɔ.

Yulum tasɪ takuu halu yɔɔ pɪkpaɣ ɔooo ñuu taa ne pɪkɔɔ piwolo tala yɔɔ le, ena ɔende eɖuu e-kpeyde yɔ. Mbu labuna ne yee halu etɔm se enasɪ yulum yɔ pɪfeyɪ kaɔe paa ñu.

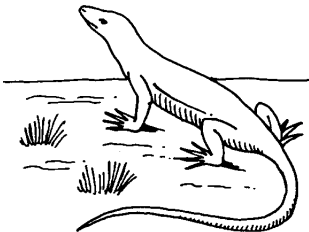
Yee nɔɔyɔ ecaɣ se ecaɣni e-halu ne eetisiy yɔ, epeyzi-i hɛɛɛ, etisiy. Mbu puɔɔ yɔ, halu wɛɛ ezi piya yɔ.

Mayv: AMAKE Evabou

Kamay kpendu halu ne e-walu yɔ

Halu ne e-walu pɛwena mbu. Payay halu se Mazalu ne walu Mazabalu. Eyaa mba pɛwɛu yɔ, ɔooo ezi papkayɔ ɔama yɔ, pɪtali pɪnzi ezi naale yɔ, paasɪ ɔama ezi halu ne e-walu yɔ. Mazabalu ñɔtɔuni Mazalu aho tɛɛ le, Mazalu kisiy ne ehaɣ-i siyye. Pɛwɛɛ mbu ka ka. Pɪtali nakuyɔ wiye le, pasuu pahɪni ne paha ɔama siyye. Halu ñaahuna ne eñɔtɪni ɔaɳ. Pɪkɛdaa le, kamay nakeye kakayɪ ɔaɳ yɔɔ ne kalu kɔtɔli Mazalu yɔɔ pam ne sɔɔndu kpa-i puɳɳ ne ekɛsɪ ne ekpiykini e-walu cuɳ cuɳ ne piɔɔe kiɔɔɛ ne Mazabalu hiy ne eɪa ne e-taa la leleɳ

ne emaysɪ puɳɳ ne etɔ se: Eɔ tɪɳni kamay kanɛ kɔ-yɔɔ se ekpendi-ɔv, ñlabale. Mbu pulaba ne halu enu ne e-walu patɪli ɔama.



Mayv: AMAKE Evabou

Wiyau ne ε-samay pɔ-tɔm

Nakvyu wiye wiyau kpeyli ε-samay tɔna payi ne eheyi-ke se: yee nɔɔyɔ epɪzaa ne εɔv ε-ñvɔ tataa se ehu-i yɔ εcelɪy-i e-kewiyay. Tɔm tune puke kpɪna hekɔ taa pulakay mbu.

Samay ŋga kapazi lu kɔɔɔm kɔɔɔm ne ehɔu-ke ne ekɔɔ ehu katɔna payi. Weyi payay se Aji ne patasi-i se Kozɔŋa yɔ, εεwe eyelɪy ñtu taa. Pikedaa le, enɪy piwiliy pɔv nakvyu taa se cuu cuu le, ewolo ekpay ɔav ne εsɔki ki-taa. Esɔkay mbu le, pɪseli-i ne pɪyayni tetu kpim, etasi labu mbu ne pitasi-i yaynav tetu kpim tɔm naadozo.



Ekvyi ne ese lɔŋ ne ewolo eheyi wiyau se yee εcay se ε ne-i palu yɔ, ewolo lav ŋvɔ ki-taa ne emayni-i. Ŋtaki le, ŋnyɪ piwiliy se : cuu cuu le, ekpay ɔav ne εsɔ pɔv ŋvɔ ki-taa ne malu ne ma ne ŋ ɔɔmayzi. Wiyau koti samay tɔna ne eheyi-ke se kowolo ɔɔɔv peeye ne kana seɔiya. Tɔv fema le wiyau ne ε-samay patali ne εla εzi kozɔŋa keheyi-i yɔ. Kozɔŋa we cɔkɔye tee see see ne εɔŋ.

Esɔbi mbu le, pɪseli-i ne pɪyayni tetu kpi le kozɔŋa tilu ne cɔkɔye ɔile ɔi-tee ne ewolo

etuni ε-γῶῶ νε ερῶzi–ι se etasiγ, wiyau enu piri-ι kpem le, eto se eetasιγ. Iγu eleeu nῶyυ kaweni pῶυ ηγυ ki-taa ne kozoηa waani-ι ne ehu wiyau. Pisiuni mbυ wiyau ha paytu se leleeyo le kozoηa keni wiyau.

Mbυ pῶtῶη se paa ηwe ḡoη ezima γῶ, taato se ηpiziγ ηwa eyaa tija.

Mayu: AMAKE Evabou

Kilindiγυυ liγυ sῶη γῶ

Eyaa siki le, Kilindiγυυ eewoki ḡipinḡe. Enay se nῶyυ siba le, pumay-ι γῶ, ekpay liidiye ne ewona ne eceli se pebimna sidu yaa eetiwwoki kpem. Nakuyυ wiye le ε-caa maymay si ne ecῶῶ eyaa eyaa se pῶkῶῶ pasini-ι ε-caa pim. Nῶyυ towolo ka ka ḡanay kῶῶ kaḡani. Aho yuwa, esυ eheni le, nῶyυ wona liidiye caḡay taa ne esu e-kuduyuu nῶnῶῶ tee ne ecaη eḡee. Teυ fema le, enay caḡay ηga ne liidiye, nῶyυ towolo se esini-ι, ε-caa wee peeye mbυ ne eweeki ne eliγ sῶη. Xenιγ nῶyυ taη le, ewolo ehuyi pῶυ ne ewolo ekpay ε-caa enu ne ewona ebi. Etema le enιγ ε-γῶῶ sῶη, mbυ puyῶῶ γῶ ε-caa sῶη ta-ι.

Mbυ labina ne paa weyi le, puwee se nῶyυ esiba γῶ, ewolo ne esee ley; paa weyi enay-η peeye mbυ le, pitalini-η γῶ; pῶkῶη pasini-η. Eyaa wokuu ley taa γῶ powoki se cee pitalini-we γῶ paasini-we ḡḡḡ.

Pisiuni mbυ ne Kilindiγυυ pasi lu sῶη.

Mayu: AMAKE Evabou

Numaḍḍonu nḍoyu tḍm

Nakuyu wiye abalu nḍoyu kuyaa se eḍey numḍu. Payay-ı se Kili. Eḍeway ɓe, ekpay kraḅay se eḍenu-ku. Pikedaa ɓe, epḍi nḍoyu numḍu taa se ewili-ı ejadɓe ndi di-taa. Eɓe se: pikazi pazi se ḡtali peeye. Eɓe, ye ḡseyḡni ña-kraḅay ḍoḅ yḍ, ḡḡtaliy ɓoḅ, yee ḡseyḡni-i "heɓɓ" yḍ, ḡtaliy. Etusi e-ti pazi esɓndaa ɓe, emayzi e-taa piḅḅ ne etḍ se, ene kpem ndu eyḍḍu mbu te, mensey ḍoḅ ne mantali ɓoḅ. Epasi kraḅay mabu yem yem se etali ɓoḅ ne ehezi. Kraḅay ñapazi seya ḍoḅ kpem. Pikedaa ɓe, kraḅay eetasiy ḍḍm, keheni numḍu taa piḍe-ke nu kpem. Kili weɓ peeye ne ḍoo yu ne piñali-ı ɓe, kraḅay kuyi ne epazi e-numḍu ḍḍm ekḍ etali tananḅ tee pala. Etali peeye ɓe, pala kazandu ne pḍḍḍ ne pḍḅḅ kpedeɓeɓe ne amuyya ne taa leleḅ.

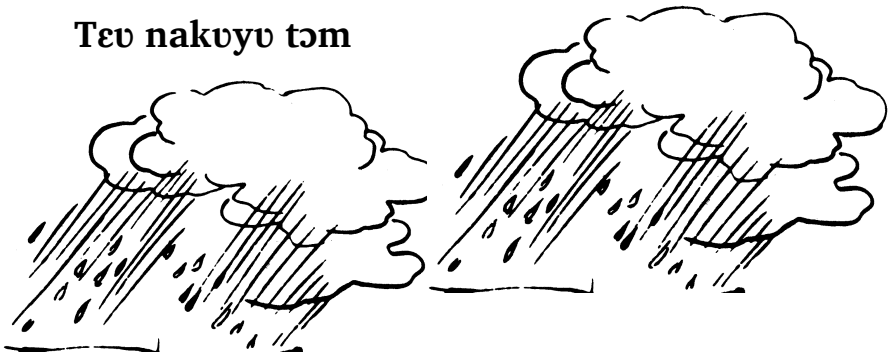
Pikedaa ɓe, abalu lelu tali, eɓe kosu wonda tuwe fele fele ne ewolo kazandu ndu ḍititḍoye ɓe, peheyi-i se: hayi abalu ña, ḍitenda-ḡ yee, wolo ḡleyzi wonda ne ḡkḍ ḡcay cɓeyḍ. Eɓe se: manıwa ye. Eɓe ḍɓe eleyzi wonda ndu tuwe cḍau yḍ ne ekḍ eḍay ḍende paaha-ı se eḍay yḍ. Powoni e-tḍḍay se etḍ ɓe, ekpay-ke ne eḍuḍ ḍoo pi-taa kapuwa taa. Peeye lelaa pḍi-ı se: taabalu ña, piɓaba ezuma ḡlaku mbu te. Peeye etḍm se: mansuma se ma eya kazandu tunɓe tiḍitḍoye naa we? Eɓe poci-i se, eɓe; ne piɓa ezuma ne mḍḅḅḅ cɓe kajalay ɓe, eḍḍḍḍ-m se mowolo meleyzi wonda ne pḍḅḅ mḍḅḅḅ; wonda

eyawa pu-yɔɔ mandu wonda ti-taa se tutɔɔ tutema le,
ukɔna-m ma-ñiŋga. Pɔla mbu ne pɔpɔsi-i se ekpay ne
ekpey-we, e le se: menkpey-mi.

Pɔla mbu ne paa weyi le, etli lɔŋ.

Mayu: AMAKE Evabou

Tɛv nakuyu tɔm



Pikeni mazay nakeye tanaŋ tɛɛ. Sukuli feyi. Malu
mewɛɛ me-neze cɔɔ nemɛya tɛɛ ne mansɔni-i tumiye
labu ne ekedi-y-m sɔsaa taa tɔm. Pikedaa le, esɔdaa ñilizi
telev telev. Tɛv tili kim kim. Pitili mbu le, mendɛɛ malu
tundɛɛ, mɔncɔni ejadɛ yɔɔ. Ejadɛ su yun kemm. Tegbeday
nakeye ñeyi kpi. Pusum limm. Eyu ɛɛniy sumay nakeye
wiluu. Puŋ weyi pɛtem-i lɔnav ne paɔi yɔ, iwiluu panu
cine ne lɔɔ yɔ. Eyaa laki yem kpeke kpeke. Nabeye sey
ne cine, lelɛa ne peedi-yɔ. Mba paatem lu hayum numɔv
taa yɔ, peseɣ ne fezajeka kɔne yɔɔ.

Pikedaa le, helifetay nakeye calɔ kɔm fɛfɛfɛ. Peedɛ
heelim sɔsɔm nabuyu titibu fiii fiii. Muzuv ñeyi ejadɛ yɔɔ

tiy tiy. Abayabaya pazi tɔv kayi kayi. Tɛv tii waaa waaa waaa. Kidiy keŋ. Eyv cenay cine ne lɔlɔ yɔ. Tɛv diy eyaa kuduyiŋ tɛɛ. Piya taa ne leleŋ ne sumayiŋ ki-taa. Pikedaa le, kiyɔtɔv ne kiyɔtɔv. Kiyele kupɔtɔv kupɔtɔv. Kalimee pazi lu ki-taa cɔlɔ cɔlɔ. Kalimaŋ pazi kou. Ejaɖe yɔɔ keli ñamm. Tɛv fɛwa. Eyaa pazi lu kuɖum kuɖum ne peɖey pa-tuma taa.

Mayv: AMAKE Evabou

Halu maanyi tɔm

Nakuyv wiye abalu nɔyɔv yabi kpaca kiyaku taa ne ekɔna le, eyaa e-halu ne e-piya ne eheyi-we se: unu camiyɛ tɔm ndv mɔyɔɔɔv yɔ. lɔɔna me-nesi taa ne una kpaca kune yɔ, wiɖiyi mi-taa nɔyɔv etaakpay-ku se elakuna puyv, mbv puyɔɔ yɔ mɛnceli-ku man-kalizay tija payi. Abalu env payay-i se Ñamtv. Kiyakuŋ naadozo ɖɛɛ hekv taa le, abalu env e-halu caa mbv eyelinu ɖasi yɔ ɛɛnay le, etɔsi se e-walu keheyi-we se pataakpay kpaca ŋv yɔ kv-yɔɔ ne ewolo ekpay-ku se eyelinu ɖasi. Etali tɛye le, ena ɖeya nakeye, ewolo se ekeɖiy-ke le, etikpasu kpaca ne ekeɖi tɔm kuɖum le, kpaca ŋv kicaŋ kumaa hav. Peeye sɔɔndv kpa-i siŋŋ. Emayzi e-ñv taa ne ekpe. Etali diya, aho yu ne etaŋ e-walu se paycay ezi halv ne e-walu yɔ. Walv tisi. Halv kɔm ne ena se e-walu cay se env leleŋ, pɔtɔpɔv se walv caway se epasi lisuv e-kicabayv le, halv se ma-walu ye ŋŋnay kpaca ŋv

ɲheyi-dɔ se dɪtaakpaɣ yɔ, mankpaɣ-ku se mowolo tɛyɛ nɛ mancaa dɔsi lɛ, kɪpɛli. Walu kaatem wɛu taa leleɲ ezuma mbu yɔ lɛ, etɔ se mmm! Yele ku-tɔm. ɛla nɛ ɛkuyi nɛ pɪla se ɛkpaɣ nɛ ɛkpeɣ-i. Tɛu fema nɛ Ñamtu cay se etasi kɔtɔu ɛzi dɛdɛ yɔ lɛ, ɛtaɲ halu, halu ɛɛtasiɣ tisuu. Peeye walu tɔm se: ye ɲnaɣ se mantaanu leleɲ yɔ, ɛɛli-m man-kpaca yaa. Halu se: yee mbu kɔɔ ɲniidi ñɔ-hɔyɛ yaa. Abalu ɛnu ɛ-taa la leleɲ nɛ ewolo ɛkpa nɛ eheyi halu se: mbu mɔnsɔɔli ñɔ-tɔm.

Mayu: AMAKE Evabou

Pɪɣa kilebay nakeɣe tɔm

Abalu nɔɔyɔ lɔlɔni piya naale nɛ nakuyɔ wiye lɛ, cikpelu wolo eheyi ɛ-caa se: caa, ɛɛli-m mbu pɪkay kenau ma-ñum ña-sum wayi yɔ. Ka-caa yaa-wɛ ɛtɛyi-wɛ ɛ-ñum tuɲa payi. Peeye cikpelu kpaɣ ɛ-ñum nɛ ɛdɛɛ dɔo ɛjadɛ naɔiyɛ taa. ɛtali peeɣe lɛ, ɛpazi ɛ-ñum mbu wɛɛkuu yem yem nɛ pɪkɔɔ pɪtɛ pɪtuɲa. Pɪkɛdaa lɛ, pɪɣa kanɛ kaanay mbu kɔtɔɔ yɔ. ɛkuyi ewolo ɛna abalu nɔɔyɔ se ɛle ɛmbu-ti tumiyɛ nɛ ɛla nɛ paa tɔɔnay maymay yɔ, ɛɛha-ti nɛ ɛtɔɔ. ɛle kpaɣ-ti ewoni-i se ɛɛɔni-ti afanaa yɔɔ.

ɛwɛɛ peeɣe, ezuma mbu ɛɛla nɛ paa afanaa ñutu maymay yɔ, ɛtɔɔ. ɛle ɛtɪpɪsi. Peeɣe ɛmayzi ɛ-taa pɪɲɲ nɛ ɛtɔ se: ɲɣu man-caa wɛni tumlaɔɔaa nɛ palaki-ti tumiyɛ. Manpɪsiɣ man-caa ɔɔɔ nɛ meheyi-i se: caa mayusini ɛsɔ nɛ mɛntɛ mayusini-ɲ. Kpaɣ-m ɛzi ña-tumlaɔɔ yɔ. Peeɣe

ekpay numɔɔ kpem yɔɔ. Ewɔsi talɔɔ lɛ, e-caa losi-i polin taa ne ekati-i ne ekpibi-i e-nɔkɔyɔɔ taa ne piya nga kolun ke-nembela yɔɔ ne kɔtɔ se: caa mayɔsɔni Caa Eɔɔ ne mente mayɔsɔni-ŋ, mantataɔ mɔnau se nya-m se ña-piya. Kpay-m ezi ña-tumlaɔɔ yɔ. Peeye ka-caa enu eya e-tumlaɔɔ taa lɛlɔ ne eheyi-i se ewolo lɔŋ ne ekpay toko ne esuu-i. Ewolo ekpay neyye ndi dɔkɔli num yɔ ne eku dɔtɔɔ kazandɔ, mbu puyɔɔ yɔ man-piya nga kaaleba yɔ kapisaa kɔkɔɔ.

Pɔlakay mbu lɛ, e-piyalɔ sɔsɔ kaawe tɛye ne eniy soo ne nɔŋtɔŋ pataŋ. Eɔɔe ekpe. Etali dɔya lɛ, enay eyaa posu-ke yem waaa ne papay. Peeye pɔcɛyi-ke piŋŋ ne kekisi se kaasɔɔ dɔya ne kacay tundɛɛ. Eyaa tumlaɔɔ lɛlɔ ne epɔsi-i se pɔlabi ezuma ne eyaa pay mbu tɛ? Elɛ se: ñe-neu weyi eeleba yɔ, enu pɔsɔna ekɔɔ ne dɔlaku kazandɔ. Peeye e-caa na mbu lɛ, eyaa-i ne epɔsi-i se: pɔlaba ezuma ne ña-taa feyi leleŋ? Peeye kɔtɔm se: caa me-neu ene ekpay e-ñum ne eɔɔe ewɛeki yem ne ma yɔ, mana-ŋ dɔwena cɔne elɛ wiɔiyi ŋtɔtɔ se: man-piyalɔ kpay ŋpeya kanɛ yɔ ne ña ne ña-taalaa elɛ kazandɔ. Peeye ka-caa heyi-ke se mbu pɔtɔŋa payi mɛwena yɔ, ñatɔna-pɔ. Ŋpɔziy ŋla mbu ŋsɔɔlaa yɔ.

Mbu labɔna ne pɔwɛɛ se dɔsɔɔli Eɔɔ ne ɔa-lanɔye pilim. Mbu puyɔɔ yɔ ekpeykiy-ɔɔ ɔa-kɔwɛekim.

Yee ña ñaawena abalɔbiya nga ko-lone taa, ezuma ŋlaba?

Mayu: AMAKE Evabou

Halv nɔɔyɔ labv afa nɛ kalimee kañatv yɔ

Halv nɔɔyɔ payay se Wetav. Halv env eke kotokolitv. Nakuyv wiye, afa wolo ε-te sav wayı se εsɔ lum. Afa env εewenı hıɖe kititalv. Halv env enıstı lum nɛ puvastı sɪnɪ ɓe, ekpay ewona epı-pv afa yıɖe tv env ε-yɔɔ sav taa. Afa yɔɔ kpɛɛ foɖo nɛ ese nɛ εɖɛɛ ɓe, εstı. Pıtalı fenastı naale ɓe, halv hay hoyɔ nɛ pıkwɔ pıtalı elvılv nɛ elvı ɓe, pıya nɪga elvılaa yɔ, kw-yɔɔ kpɛɛ ɖɔɖɔ. Nakuyv wiye ɓe, kalimee wolo atɔkı mıla nemeya tɛɛ ɓe, ewolo emapı-ye nɛ astı a-tıɪa payı.



Pukoo piwiy halu enu; piye naɗiyε lu ε-nanɗbanay yoo ne emaki kobusi ne eyay kalimee ana se ayele-i ne ehesi mbu yooo! Mbu puyoo ya, awoki ne alon e-heɗ taa. Halu koo ne esi ne powoni-i pepi. Eyaa tija kaasum e-yoo mbu se elaki kañatu kpem.

Mbu pilabina ne potoɗ se pitipoozi se eyaa elaki kpina kañatu mbu. Mbu puyoo ya, mbu eyu duu ya, mbu ekay kum.

Mayv: AMAKE Evabou

Halv mayzuv ne ε-walv se εna yoo

Abalu nooyu payay se Hasu. Ekpay halv nooyu, payay-i se Somiye. Pilabi ezi pinzi naanza yoo le, palulu piya naale. Nakuyv wiye le, Somiye ene ecɔni ε-walv piɗɗ ne εna se εcay tom ε-wezuu cayv taa. Yee etali doli ne nabeye emaki dama yoo, esiɗkiy ne ehezv-we ne pucɔ edεε. Eliy kiyaku taa le, εnoo sulum pazv yem ne ekpe. Nakuyv wiye le, halv mayzvi ε-taa ne etoo se sooo mamayzivi abalu ene ne mana se ma ne i le, akulu lelv doɗ. Aho yu ne abalu suv ne ehenu kajalay ne epasi doo. Pikedaa le, ε-halv suv ε-cɔlv ezi eedoo le, ekusi abalu ne eheyi-i se: ma-walv sooo mancay se mana-ɗ dɗlv ne mana se ahuu lelv. Walv se: dooo yoo, wiɗiyi ɗtatulabita lakasi sine, sooo we? Halv se: kpay sooo yoo, ɗnay-m camye. Halv ticanjkuu εma ε-walv katanja kpa! Hasu se:

ma nyaki kataŋa naawe? Eɛ se: ɛɛɛ, mɔyɔɔɔɔɔa ŋtanu yaawe? Kpagbaa mbu ɛ, abalu huziŋ kpa ne ɛkuyi ɛsɔɔɔɔa ne ɛkpa halu ne ɛyayɔɔɔ-ɪ tetu kpim ne ɛyayɔɔɔ-ɪ katansi naale ne eheyi-i se: kataŋa kuɔɔɔmay luluu katansi naale; yee ŋtɔɔ kumiyɛ Komina yɔ, ŋkɔŋ se ŋheyiɔɔ-ɔɪ ɛ, ŋheyiɔɔ ne kezɛyɔ. Abalu tuu-i tataa pɛɛɛ ezi ɛgbam kuv kpɔna ne etuu-yɛ yɔ. Abalu ɛnu eheyi-i se: ña ŋmayɔɔ se ŋkɔla-m payɔ ne ŋte ŋkɔli-m kpɛyɔduu yɔ ŋpɔɔɔɔ ŋlabɔ-m nabuyɔ yaawe? Pɔsɔni kɔyaku ŋgu halu tatasɔ tɔm se pamayɔ wiɔɔɔyi.

Lim mbu pikpɛŋ hɛɛɛ yɔ, mbu kpakɔɔɔni ɛyɔ; puyɔɔ ɛ, halaa itaacay pa-walaa tɔm yem yem pataakɔɔ pamabɔ-wɛ ne pɔɔɔɔni-wɛ ne pakpɔy ɛɛɛɛ. Yee ña ñɛwenɔ Hasɔ lone taa, ɛzɔma ŋlakɔ halu ɛnu?

Mayɔ: AMAKE Evabou

Achévé d'imprimer par AFASA
Dépôt légal N° 33/MATDCL/octobre 2011
B.P. 57, Kara – Togo

Prix : 200 F CFA